

# Soluble ST2 protein as a new biomarker in patients with precapillary pulmonary hypertension

Marta Banaszekiewicz<sup>1</sup>, Arkadiusz Pietrasik<sup>2</sup>, Szymon Darocha<sup>1</sup>, Michał Piłka<sup>1</sup>, Michał Florczyk<sup>1</sup>, Anna Dobosiewicz<sup>1</sup>, Piotr Kędzierski<sup>1</sup>, Ewa Pędzich-Placha<sup>2</sup>, Janusz Kochman<sup>2</sup>, Grzegorz Opolski<sup>2</sup>, Adam Torbicki<sup>1</sup>, Marcin Kurzyna<sup>1</sup>

<sup>1</sup>Department of Pulmonary Circulation, Thromboembolic Diseases and Cardiology, Centre of Postgraduate Medical Education, European Health Centre Otwock, Poland

<sup>2</sup>First Chair and Department of Cardiology, Medical University of Warsaw, Warsaw, Poland

**Submitted:** 1 November 2019

**Accepted:** 25 March 2020

Arch Med Sci

DOI: <https://doi.org/10.5114/aoms.2020.98635>

Copyright © 2020 Termedia & Banach

## Corresponding author:

Arkadiusz Pietrasik MD PhD  
First Chair and Department  
of Cardiology  
Medical University of Warsaw  
61 Żwirki i Wigury St  
02-091 Warsaw, Poland  
E-mail: [apietrasik@tlen.pl](mailto:apietrasik@tlen.pl)

## Abstract

**Introduction:** Non-invasive tests that may improve clinical evaluation of pulmonary hypertension (PH) are needed. The purpose of this study was to assess the role of soluble ST2 (sST2) in patients with PH.

**Material and methods:** A total of 57 patients with chronic thromboembolic PH and 43 patients with idiopathic arterial PH were enrolled in this study. All patients were evaluated for World Health Organization (WHO) functional class (FC), *N*-terminal prohormone B-type natriuretic peptide (NT-proBNP), troponin T (TnT), and hemodynamics. Plasma sST2 was assessed by an immunofluorescent *in vitro* diagnostic assay. All patients were followed up from the date of blood sampling. The endpoint was all-cause death.

**Results:** The median sST2 concentration was 32.8 ng/ml (IQR: 21.6–48.5 ng/ml) in the whole study population. Significant differences were found between median sST2 in successive WHO FCs (FC II vs. FC III,  $p = 0.002$ ; FC III vs. FC IV,  $p = 0.12$ ; FC II vs. FC IV,  $p = 0.008$ ). Significant correlations were found between sST2 and hemodynamic parameters: mean right atrial pressure ( $r = 0.56$ ;  $p < 0.05$ ), mean pulmonary artery pressure ( $r = 0.25$ ;  $p < 0.05$ ), cardiac index ( $r = -0.40$ ;  $p < 0.05$ ), pulmonary vascular resistance ( $r = 0.41$ ;  $p < 0.05$ ), and between sST2 and WHO FC ( $r = 0.36$ ;  $p < 0.05$ ), NT-proBNP ( $r = 0.55$ ;  $p < 0.05$ ), and TnT ( $r = 0.44$ ;  $p < 0.05$ ). sST2 concentration above the median was associated with worse clinical prognosis ( $p = 0.02$ , Kaplan-Meier).

**Conclusions:** sST2 seems to be a marker of poor clinical prognosis in patients with PH.

**Key words:** pulmonary hypertension, soluble ST2, biomarkers, right heart failure.

## Introduction

Pulmonary hypertension (PH) is a progressive disease characterized by elevated pulmonary vascular resistance, which leads to an increased workload in the right ventricle, symptoms of heart failure, and death if not properly treated. The routine clinical evaluation of PH basically comprises an exercise capacity assessment, biomarkers, echocardiography, and right heart catheterization (RHC) [1]. Because of the invasive nature of RHC, it cannot be frequently repeated; thus, non-invasive tests for

monitoring disease severity and proper therapeutic decision-making are continuously sought. Recently, biomarkers, such as *N*-terminal pro-hormone B-type natriuretic peptide (NT-proBNP) and troponin-T (TnT), have emerged as attractive non-invasive tools for monitoring patients with PH [2–6]. However, given the complexity of PH, it is unlikely that a single biomarker will be appropriate for the assessment of disease severity and patient outcomes. Therefore, searching for new biomarkers has serious clinical significance. The soluble ST2 (sST2) protein is an interleukin (IL)-1 receptor family member that occurs in two isoforms: transmembrane ST2 ligand (ST2L) and soluble ST2 (sST2) [7–9]. Soluble ST2 is a blood-soluble truncated receptor that can be detected in serum. Interleukin 33 is a member of the IL-1 receptor ligand family and the dedicated ligand of ST2L receptor [7–10]. Soluble ST2 is supposed to work as a “decoy” receptor for IL-33, inhibiting the IL-33/ST2L signaling pathway. Interleukin 33 has been shown to exert an anti-hypertrophic effect through binding to ST2L receptors in cardiomyocytes [7–9]. The soluble ST2 protein is released predominantly in response to myocardial stress or strain [11], but it is also known for its involvement in type 2 immune responses [12]. In the last years, sST2 has been used as a novel biomarker of myocardial strain and remodeling mainly among patients with left heart failure. Based on available research, a prognostic value for mortality in chronic and acute heart failure has been revealed [13–15]. Moreover, assessed in settings of acute myocardial infarction, sST2 levels correlate with post-infarct cardiac remodeling [16] and can be predictive of 30-day mortality [17]. The relation of sST2 concentration with right heart failure has not been investigated extensively yet. Previous studies revealed the potential role of sST2 in pulmonary vascular remodeling in patients with idiopathic pulmonary arterial hypertension (iPAH), correlations of sST2 levels with right ventricular dysfunction, as well as prognostic value in cohorts of patients with pulmonary arterial hypertension (PAH) and chronic thromboembolic pulmonary hypertension (CTEPH) [18–20]. The aim of this study was to assess the role of sST2, an emerging biomarker of heart failure, in a variety of patients with right ventricular overload due to PH of different etiologies.

## Material and methods

The study was performed at the European Health Centre in the Department of Pulmonary Circulation, Thromboembolic Disease and Cardiology, Centre of Postgraduate Education Medical in Otwock, Poland, in association with the 1<sup>st</sup> Chair and Department of Cardiology, Medical University of Warsaw, Poland. The study protocol was approved

by the local ethics committee (no. KB/181/2016), and all study participants provided signed informed consent.

Between September 2016 and August 2017, 100 patients with iPAH or CTEPH were prospectively enrolled in the study. The diagnosis of iPAH or CTEPH was established according to the European Society of Cardiology (ESC) Guidelines [1]. Patients with at least one of the following criteria were excluded: PH of a type other than iPAH or CTEPH, left heart diseases, connective tissue diseases, chronic respiratory diseases, diabetes mellitus, and other diseases caused by inflammatory processes. Relevant left heart disease was ruled out by echocardiography, which was performed in the screening phase. In addition, patients with exacerbated PH were excluded and all participants were stable. Subpopulation of patients with exacerbated disease were defined by clinical features such as sudden deterioration in functional parameters to worse World Health Organization functional class (WHO-FC), signs of right heart failure decompensation, such as ascites or peripheral edema, requiring escalation of diuretic treatment and/or the use of catecholamines as well as any changes in targeted medical therapy of PH within the last 4 weeks. Additionally, in patient with CTEPH treated with balloon pulmonary angioplasty, we did not perform sST2 concentration assessment during the perioperative period, defined as 2 weeks after each session. As stable we defined patients without any deterioration of exercise tolerance, with no need to escalate diuretic treatment or to change targeted therapy of PH in the last 4 weeks. The patients were admitted for routine hospitalization and were evaluated for WHO FC, 6-minute walking test (6MWT), NT-proBNP, and TnT. All patients underwent RHC according to current guidelines [21]. A Swan-Ganz catheter was used to measure the right atrial pressure (RAP), right ventricular pressure (RVP), pulmonary artery pressure (PAP), pulmonary capillary wedge pressure (PCWP), cardiac output (CO) assessed with thermodilution, cardiac index (CI), stroke volume (SV), pulmonary vascular resistance (PVR), and systemic vascular resistance (SVR). The heart rate (HR), systolic arterial pressure (SAP), diastolic arterial pressure (DAP), O<sub>2</sub> saturation of mixed venous blood (MVSatO<sub>2</sub>) samples and O<sub>2</sub> saturation of arterial blood (AoSatO<sub>2</sub>) were also assessed during the RHC procedure. All the laboratory tests, including NT-proBNP and TnT assessment, as well as blood collection for sST2 assessment, were performed on the same day. Other procedures, such as RHC and 6MWT, were performed the next day after laboratory tests had been performed. The blood samples for sST2 evaluation were obtained directly from the peripheral vein. EDTA anticoagulated blood samples

were collected and plasma aliquots were frozen at  $-80^{\circ}\text{C}$  until further analysis. All the sST2 concentration measurements were performed after 2 months from the date of blood collection. The sST2 concentration was measured in frozen samples using the ASPECT-PLUS sST2 test (Critical Diagnostics, San Diego, CA, USA), a rapid lateral flow immunoassay for the quantitative measurement of sST2 in human plasma using the ASPECT reader. The ASPECT-PLUS ST2 test cassette consists of murine mouse monoclonal antibodies against human sST2, goat polyclonal antibodies against murine IgG, and a fluorescent dye. The ASPECT Reader measures the fluorescence signal, and quantitative sST2 values are given as nanograms per milliliter. The plasma sST2 concentration was assessed in accordance with the manufacturer's manual. Based on the measurement limits of the ASPECT Reader, an sST2 plasma concentration  $< 12.5$  ng/ml or  $> 250$  ng/ml was reported as being below or above the limit values, respectively. According to the manufacturer's manual, the analysis procedure meets the permissible criteria for analytical parameters, with an average coefficient of variation (CV) of 10.4% for the variation within the assay and 13.6% for the variation among assays.

The whole population underwent the follow-up. During the follow-up period (median 7.67 months, IQR 3.3–10.77) patients were under the care of our center. The endpoint was all-cause death. The population was divided into two subpopulations: one characterized by a sST2 plasma concentration below the median (group A) and the second by a sST2 plasma concentration above the median (group B). The cumulative survival was compared between the two subpopulations.

According to current guidelines [1] all patients with iPAH received the targeted therapy with: sildenafil, endothelin receptor antagonist (ERA) or prostanoids, during the follow-up period. Eight (19%) patients received dual-targeted therapy. There were no changes in the targeted treatment therapy during the follow-up. 36 (63%) patients diagnosed with CTEPH received targeted therapy (sildenafil or riociguat). Additionally 29 (51%) patients were treated with balloon pulmonary angioplasty (BPA) during the follow-up. No pulmonary endarterectomy was performed within the CTEPH study population.

### Statistical analysis

Nominal variables are presented as numbers and percentages. Continuous variables with normal distribution are presented as means and standard derivations (SDs). Variables with distribution different from a normal distribution are presented as medians with 25<sup>th</sup> and 75<sup>th</sup> percentile values, i.e., IQR. Groups were compared by paired Stu-

dent's *t* test or the paired Wilcoxon test when appropriate. Spearman correlation was used to test for an association between sST2 and hemodynamic, biochemical, and functional variables. The proportion of patients surviving was estimated by the Kaplan-Meier method with the date of the sST2 blood concentration measurement as the starting point. The survival difference between groups A and B was compared using log-rank. A *p*-value  $< 0.05$  was considered significant. All statistical analyses were performed using STATISTICA 13.1 (STATSOFT, Tulsa, OK, USA).

### Results

One hundred patients were included in the study (65 females, 35 males, median age 59.7  $\pm$  18.0 years). Thirty-three (33%) patients presented with symptoms of WHO FC II, 59 patients (59%) WHO FC III, and 8 (8%) WHO FC IV. CTEPH was diagnosed in 57 patients (57%), and 43 patients (43%) suffered from iPAH. The baseline characteristics of the study population are summarized in Table I. The hemodynamic assessment revealed increased mean pulmonary artery pressure (mPAP) (43.0  $\pm$  12.3 mm Hg) and increased PVR (6.95  $\pm$  3.87 Wood units), normal CI (2.70  $\pm$  0.69 l/min  $\times$  m<sup>2</sup>), and border values of RAP (6.0  $\pm$  4.4 mm Hg). The mean 6MWT distance was decreased (365  $\pm$  103 m). The NT-proBNP concentration was increased (median 529 pg/ml [IQR: 234–1889 pg/ml]). In the study population, the median sST2 concentration was 32.8 ng/ml [IQR: 21.6–48.5 ng/ml]. Figure 1 is a histogram of sST2 concentration in the general study population.

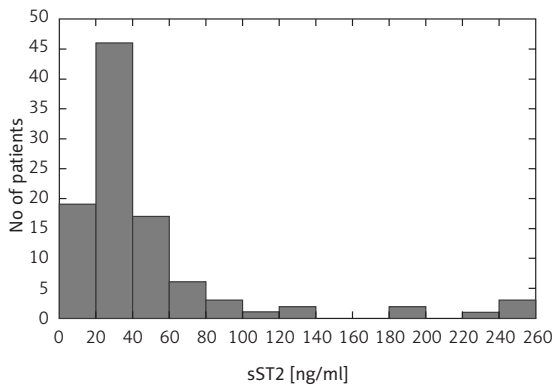
We found no significant differences in the median sST2 concentration according to sex (median sST2 concentration in females and males was 29.1 [IQR 20.6–42.3 ng/ml] and 39.8 [IQR 25.2–58.1 ng/ml], respectively; *p* = 0.103) and the etiology of PH (median sST2 concentration in patients with CTEPH was 34.0 [IQR 22.2–48.4] ng/ml, and in patients with iPAH 29.4 [IQR 21.4–52.0] ng/ml, *p* = 0.94). The median sST2 concentration in patients characterized by FC II was 25.139 ng/ml [IQR 17.28–37.41 ng/ml], FC III 36.626 ng/ml [IQR 25.34–58.85 ng/ml], and FC IV 78.579 ng/ml [IQR 29.19–83.19 ng/ml]. Significant differences were found between the median sST2 according to WHO FC (FC II vs. FC III *p* = 0.002; FC III vs. FC IV *p* = 0.12; FC II vs. FC IV *p* = 0.008). Figure 2 presents the sST2 concentration in certain WHO FCs in the general study population.

In the general study population, we found significant hemodynamic correlations between sST2 concentration and mean right atrial pressure (mRAP) (*r* = 0.562; *p* < 0.05), mPAP (*r* = 0.252; *p* < 0.05), CI (*r* = -0.404; *p* < 0.05), PVR (*r* = 0.410; *p* < 0.05), and MVsatO<sub>2</sub> (*r* = -0.392; *p* < 0.05). The assessment of functional capacity and bio-

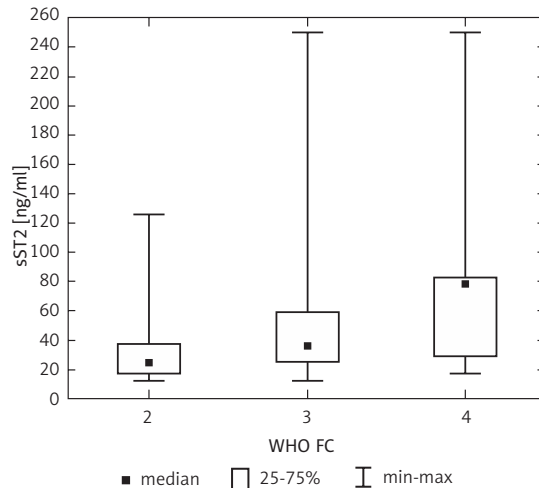
**Table I.** Baseline characteristics of the study population

Variables	PH population	iPAH	CTEPH
Patients, <i>n</i>	100	43	57
Females, <i>n</i>	65	32	33
Age [years]	59.7 ±18.0	66 ±2	63 ±2
WHO FC, <i>n</i> (%)			
I	0	0	0
II	33 (33)	11 (26)	22 (38)
III	59 (59)	27 (63)	32 (56)
IV	8 (8)	5 (11)	3 (5)
mRAP [mm Hg]	6.0 ±4.4	5.0 ±4.6	7.0 ±4.2
mPAP [mm Hg]	43.0 ±12.3	42.0 ±12.7	46.0 ±12.0
PCWP [mm Hg]	10.0 ±2.9	8.0 ±2.9	10.0 ±2.8
CI [l/min × m <sup>2</sup> ]	2.70 ±0.69	2.70 ±0.63	2.73 ±0.73
PVR [Wood units]	6.95 ±3.87	7.74 ±3.77	6.83 ±3.96
MVsato <sub>2</sub> (%)	69.0 ±6.2	68.0 ±5.9	69 ±6.4
AOsato <sub>2</sub> (%)	95.0 ±4.0	96.0 ±4.6	95.0 ±3.4
NT-proBNP [pg/ml]	529 [234–1889]	515 [242–2433]	604 [197–1633]
TnT [ng/ml]	0.010 [0.006–0.018]	0.012 [0.007–0.020]	0.009 [0.006–0.017]
sST2 [ng/ml]	32.8 [21.6–48.5]	29.4 [21.4–52.0]	34.0 [22.2–48.3]
6MWT [m]	365 ±103	365 ±123	365 ±287

PH – pulmonary hypertension, iPAH – idiopathic pulmonary arterial hypertension CTEPH – chronic thromboembolic pulmonary hypertension, WHO FC – World Health Organization functional class, mRAP – mean right atrial pressure, mPAP – mean pulmonary artery pressure, PCWP – pulmonary capillary wedge pressure, CI – cardiac index, PVR – pulmonary vascular resistance, MVsato<sub>2</sub> – mixed venous oxygen saturation, AOsato<sub>2</sub> – aortic oxygen saturation, NT-proBNP – N-terminal prohormone B-type natriuretic peptide, TnT – troponin T, 6MWT – 6-minute walking test.



**Figure 1.** Histogram of soluble ST2 concentrations in the studied population



**Figure 2.** Median soluble ST2 (sST2) concentration in particular WHO functional classes in the study population

chemical parameters of heart overload revealed a significant correlation between sST2 and WHO FC ( $r = 0.355$ ;  $p < 0.05$ ), as well as NT-proBNP ( $r = 0.550$ ;  $p < 0.05$ ) and TnT ( $r = 0.436$ ;  $p < 0.05$ ). In addition, a significant negative correlation between sST2 and 6MWT ( $r = -0.422$ ;  $p < 0.05$ ) was observed. However, we found no significant

correlations between plasma sST2 concentration and age ( $r = -0.037$ ,  $p > 0.05$ ) or body mass index ( $r = 0.103$ ,  $p > 0.05$ ). In patients with iPAH,

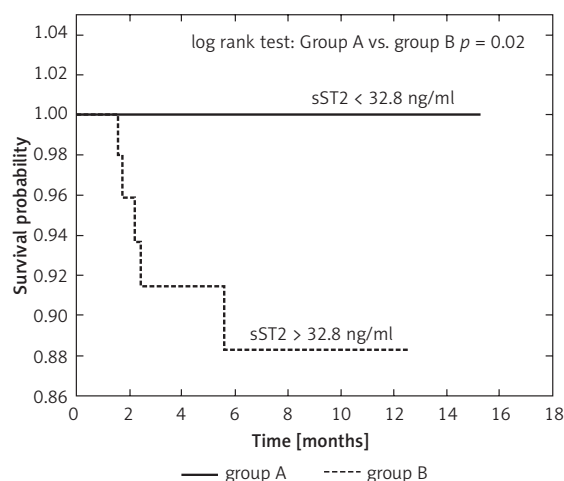
**Table II.** Clinical and hemodynamic correlations with soluble ST2

Variable	PH population (r value)	iPAH (r value)	CTEPH (r value)
mRAP [mm Hg]	0.562*	0.666*	0.425*
mPAP [mm Hg]	0.252*	0.134	0.479*
PCWP [mm Hg]	0.073	-0.011	0.229
CI [l/min × m <sup>2</sup> ]	-0.404*	-0.478*	-0.334*
CO	-0.370*	-0.420*	-0.306*
PVR [Wood units]	0.410*	0.383*	0.456*
MVsatO <sub>2</sub> (%)	-0.392*	-0.578*	-0.192
AOsatO <sub>2</sub> (%)	-0.132	-0.106	-0.131
HR	0.220	0.372*	0.125
NT-proBNP [pg/ml]	0.550*	0.725*	0.248
TnT [ng/ml]	0.436*	0.635*	0.171
6MWT [m]	-0.422*	-0.487*	-0.335*
WHO class	0.355*	0.393*	0.299*
Weight [kg]	-0.024	-0.0143	0.030
Height [m]	0.010	0.094	-0.082
BMI [kg/m <sup>2</sup> ]	0.103	0.147	0.159
Age [years]	-0.037	0.019	-0.083

\* $P < 0.05$ . PH – pulmonary hypertension, iPAH – idiopathic pulmonary arterial hypertension, CTEPH – chronic thromboembolic pulmonary hypertension, mRAP – mean right atrial pressure, mPAP – mean pulmonary artery pressure, PCWP – pulmonary capillary wedge pressure, CI – cardiac index, PVR – pulmonary vascular resistance, MVsatO<sub>2</sub> – mixed venous oxygen saturation, AOsatO<sub>2</sub> – aortic oxygen saturation, NT-proBNP – N-terminal prohormone B-type natriuretic peptide, TnT – troponin T, 6MWT – 6-minute walking test.

sST2 strongly and significantly correlated with NT-proBNP ( $r = 0.725$ ;  $p < 0.05$ ) and TnT ( $r = 0.635$ ;  $p < 0.05$ ), whereas in patients with CTEPH this correlation was not significant. Correlations between sST2 and hemodynamic parameters were materially stronger in the subgroup of patients with iPAH, but a significant correlation between sST2 and mPAP was found ( $r = 0.134$ ;  $p < 0.05$ ) only in patients with CTEPH. Table II presents the correlations between sST2 and functional, biochemical, and hemodynamic parameters in the general study population and both subgroups.

A total of 5 patients (5%) died during the observation period (median 7.67 months, IQR 3.3–10.77 months). One patient (M, 69-year-old, CTEPH) died because of pneumonia, two patients (F, 72-year-old, iPAH; M, 61-year-old, iPAH) died because of end-stage heart failure. One death (F, 20-year-old, CTEPH) was sudden, presumed cardiac, and one patient (F, 53-year-old, iPAH) died because of a neurological event. All the patients who died had the sST2 concentration above the median (32.8 ng/ml). Thus, a ST2 concentration above the median was associated with worse clinical prognosis (Figure 3). We found a significant difference between group A and B regarding survival ( $p = 0.02$  by log-



**Figure 3.** Kaplan-Meier cumulative survival curve for the studied population

rank test). Table III presents characteristics of patients with sST2 concentration below the median (group A) and above the median (group B).

## Discussion

This is one of the very first studies to characterize the utility of soluble ST2 concentration for

**Table III.** Characteristics of patients with soluble ST2 (sST2) concentration below (group A) and above (group B) the median. Data are presented as *n* (%), mean  $\pm$  SD, or median [IQR]

Variables	Group A	Group B	<i>P</i> value (group A vs. group B)
Patients, <i>n</i>	50	50	–
Females, <i>n</i>	36	29	–
Age [years]	56.6 $\pm$ 18.5	52.9 $\pm$ 17.4	0.220
WHO FC, <i>n</i> (%)			
I	0	0	0.163
II	23 (46%)	11 (22%)	
III	25 (50%)	34 (68%)	
IV	2 (4%)	5 (10%)	
mRAP [mm Hg]	5.6 $\pm$ 2.8	8.8 $\pm$ 5.3	0.002
mPAP [mm Hg]	41.2 $\pm$ 10.5	46.7 $\pm$ 13.6	0.037
PCWP [mm Hg]	9.4 $\pm$ 2.5	9.7 $\pm$ 3.3	0.744
CI [l/min $\times$ m <sup>2</sup> ]	2.9 $\pm$ 0.69	2.50 $\pm$ 0.67	0.006
PVR [Wood units]	6.84 $\pm$ 3.2	9.01 $\pm$ 4.21	0.012
MVsato <sub>2</sub> (%)	69.7 $\pm$ 4.6	65.8 $\pm$ 7.0	0.004
AOsato <sub>2</sub> (%)	95.8 $\pm$ 3.4	93.9 $\pm$ 4.3	0.021
NT-proBNP [pg/ml]	826 [138–702]	1462 [396–3643]	0.008
TnT [ng/ml]	0.011 [0.006–0.012]	0.030 [0.009–0.026]	0.009
6MWT [m]	388 $\pm$ 107	345 $\pm$ 96	0.026

WHO FC – World Health Organization functional class, mRAP – mean right atrial pressure, mPAP – mean pulmonary artery pressure, PCWP – pulmonary capillary wedge pressure, CI – cardiac index, PVR – pulmonary vascular resistance, MVsato<sub>2</sub> – mixed venous oxygen saturation, AOsato<sub>2</sub> – aortic oxygen saturation, NT-proBNP – N-terminal pro-brain natriuretic peptide, TnT – troponin T, 6MWT – 6-minute walking test.

the assessment of disease severity and patient outcomes in two types of PH, in addition to well-established and widely used biomarkers. Previous studies have evaluated numerous biomarkers in cohorts of patients with PH of different etiologies, but a specific biomarker with additional prognostic value is still not well defined. There are still only limited data regarding sST2 levels in PH of different etiologies. Soluble ST2 is a part of IL-33/ST2 ligand interaction, which is supposed to form a cardioprotective system, and is upregulated in response to myocardial injury or stress in cardiomyocytes and fibroblasts [11]. One of the main and most common problems for all forms of PH, regardless of etiology, is right heart overload. This appears to be a major factor stimulating the release of sST2. However, it should be remembered that in PAH and CTEPH, cytokines and interleukins have great significance in the pathophysiology of these conditions [22, 23]. The reason for assessment of the sST2 level in patients in CTEPH and IPAH was to investigate if there exist any differences in sST2 concentration

in the context of different mechanisms underlying the two diseases.

There are currently several methods for evaluating sST2 concentration in human plasma. The quantitative lateral flow test for rapid sST2 concentration measurement – the ASPECT-PLUS ST2 test – was successfully applied in our study. Pursuant to the manufacturer's manual, in healthy volunteers, the interquartile values of ST2 were between 15 and 25 ng/ml, whereas the concentration of 35 ng/ml falls between the 90<sup>th</sup> and 95<sup>th</sup> centiles of the healthy population [24]. In patients diagnosed with heart failure with sST2 protein concentrations  $\geq$  35 ng/ml, the risk of adverse events (hospitalization or death in 1 year) has been reported to be higher than in patients with ST2 protein concentrations below this value [17, 24–26]. Dieplinger *et al.* evaluated the ASPECT-PLUS ST2 test and performed an assay comparison with the MBL ST2 test and PRESAGE ST2 ELISA in a cohort of patients with acute dyspnea. At the sST2 level cut-off of 35 ng/ml, proposed in previous studies, the sST2 results obtained with the ASPECT-PLUS ST2 test

were similar to those obtained with the MBL ST2 test as well as with the PRESAGE ST2 ELISA assay [27]. In our study median sST2 values in CTEPH and iPAH patients were close to the cut-off for risk stratification of patients with heart failure (i.e., 35 ng/ml) [25].

Several studies have been performed previously in order to assess the reference values of sST2 concentration in a healthy population. Lu *et al.* established the gender-specific reference values using 245 female and male serum samples from the United States population. The sST2 concentration was significantly higher in males than in females (24.9 vs. 16.9 ng/ml;  $p < 0.0001$ ), but there was no correlation of sST2 concentration with age in either gender ( $r = -0.07$ ;  $p = 0.14$ ). More precisely, the reference intervals for sST2 levels were evaluated to be 8.6–49.3 for males and 7.2–33.5 ng/ml for females [24]. These values were similar to those obtained from Framingham Heart Study participants [28], but substantially higher in comparison to those assessed by Dieplinger *et al.* [29]. Notably, in the healthy cohort from the Framingham Heart Study, the strongest correlations of sST2 were found with age and sex. There is some inconsistency regarding correlation of sST2 with age and sex in the data available. Coglianesi *et al.* hypothesized that this trend may reflect the effects of sex hormones on sST2 concentration: in their study women on hormone replacement therapy (estrogen without progestin) had the lowest concentration of sST2 [28]. Dieplinger *et al.* revealed significant gender-dependent, but not age-related, differences in sST2 concentration [29]. To sum up, there are still no consistent results in the available literature: However, it should be emphasized that cofactors influencing other biomarker concentrations, such as renal function or body mass index (BMI), did not significantly correlate with sST2 levels [28]. In our study we found no significant correlations with age or BMI as well as no significant differences in sST2 concentration according to gender status. Further studies are needed to investigate these specific discrepancies.

There is growing evidence that the sST2 concentration could be useful in monitoring disease severity and provides information about prognosis in patients suffering from cardiovascular diseases with additive value to well-established biomarkers, such as natriuretic peptides and cardiac troponins [30–32]. In 2003, Weinberg *et al.* announced that sST2 is an emerging biomarker in patients with heart failure [33]. Since then, numerous researchers have suggested that sST2 seems to be a useful biomarker with additive prognostic value to natriuretic peptide of both acute and chronic heart failure as well as in ST-elevation myocardial infarction patient co-

horts [13–15, 34, 35]. Thus, according to the 2017 American College of Cardiology Foundation/American Heart Association (ACCF/AHA) guidelines sST2 has great additional clinical value in risk stratification of patients with chronic and acute heart failure [36].

However, the importance of sST2 concentration in the population of patients with right heart failure due to PH still remains unclear. Previously, the association between sST2 concentration and right ventricular systolic pressure was reported by Shah *et al.* [37]. In addition, Carlomango *et al.* reported increased sST2 concentration in patients with PAH, with the suggestion that the increase of sST2 concentration was closely related to right ventricular dilatation and systolic dysfunction. However, it is worth mentioning that only 25 patients with PAH of various etiologies and 10 in the control group were enrolled in their study [18]. The sST2 concentration was significantly higher in patients suffering from PAH compared to the control group. Furthermore, sST2 correlations with parameters of right ventricle remodeling assessed with cardiac magnetic resonance (CMR), and with functional as well as biochemical parameters, such as 6MWT distance and NT-proBNP, were noted [18]. Zheng *et al.* enrolled in their study 40 idiopathic PAH patients and 24 healthy controls. Their results revealed elevated sST2 concentration in patients with PAH compared to the control group. Pearson correlation analysis revealed a significant correlation between sST2 and CI, mean RAP, mixed venous oxygen saturation and arterial oxygen saturation [38]. The correlations obtained in our study seem to be stronger than those obtained by Zheng. In 2019 Geenen *et al.* investigated sST2 concentration in 104 patients with PH of various etiologies. Median sST2 concentration in their study was similar to that obtained in our study (34.5 ng/ml vs. 32.8 ng/ml). The results revealed significant correlation of sST2 levels and hemodynamic parameters, 6MWT, functional class and NT-proBNP [19]. Our results also revealed significant correlations with hemodynamic parameters, NT-proBNP, TnT, and functional capacity. Moreover, our results reflect the strong pathophysiological basis observed in previous research concerning the role of sST2 concentration in patients with right heart overload due to PH. Notably, in contrast to the results obtained by Geenen *et al.*, in our study sST2 concentration did not differ significantly between PH subgroups. There can be several reasons for our results. Firstly, the number of patients enrolled in our study was relatively small and it could be insufficient to reveal statistically significant differences between PH subgroups. Secondly, the similar sST2 concentrations between PH subgroups in our study could be due to simi-

lar hemodynamic parameters (such as mPAP and PVR), and hence a similar degree of right ventricular overload in both groups. Thus, it could also be the proof that there is only a small share of endothelium as the source of sST2 [20], because differences in the endothelium remodeling lie at the basis of pathophysiological differences between those two types of PH. However, much could be speculated about the significant differences in sST2 levels and correlations between particular types of PH, observed in previous studies. The role of sST2 in PH may be associated with its role in fibrosis of cardiac muscle in response to increased pulmonary vascular resistance induced by PH, but the relationship between sST2 concentration and the pulmonary vascular bed has not been investigated thoroughly [18, 37]. We hypothesize that the differences in sST2 concentration between particular PH subgroups, observed in previous studies, may result from endothelial dysfunction and different pathological changes occurring in the vessels in the course of CTEPH and iPAH. Additionally, cytokines seem to contribute to the pathogenesis of PH; thus it has been proposed that the pathway of the IL33/ST2 receptor could be included in the PAH development [20, 22]. Interestingly, Willems *et al.* revealed that the sST2 concentration significantly increased 24 h after patients underwent peripheral vascular surgery, arterial bypass or femoral endarterectomy [39]. Obtained results suggest that sST2 may be related to arterial injury. In addition, Pascual-Figal *et al.* reported that the lungs demonstrate upregulation of sST2 mRNA. The authors also identified an association between increased alveolus thickness and upregulation of sST2, indicating the degree of pulmonary congestion and ST2 production. Thus, sST2 level may be influenced by dynamic contributions of the lungs and vascular endothelium [40]. This may suggest that sST2, rather than being limited to cardiac remodeling only, may reflect the broad condition of the heart, lung and pulmonary vascular bed system [40, 41]. As a result, sST2 may be considered as a comprehensive and useful biomarker in addition to other widely used biomarkers, secreted predominantly from ventricular tissues, in the diagnostic process, monitoring disease severity and risk stratification in patients with PH [42]. Further studies with larger cohorts are needed to investigate this process; however, it seems that a combination of multiple biomarkers may be beneficial in guiding PH diagnosis and therapy.

This study has several limitations. First, the number of subjects was relatively low. Only iPAH and CTEPH patients were enrolled, and other types of PH were excluded. Second, the prognostic value

of sST2 was established only according to death. Finally, we did not use the FDA-approved ELISA format, but we tried to evaluate the ASPECT-PLUS ST2 test, a rapid quantitative lateral flow for measurement of sST2 in human plasma, which has not yet been approved by the FDA.

In conclusion, the results suggested that sST2 could be a promising biomarker of right ventricular failure in patients with precapillary PH, alongside already well-established and widely used biomarkers such as NT-proBNP and troponin T. The sST2 protein correlates with myocardial strain and injury markers of heart failure, as well as invasive hemodynamic parameters of PH. Moreover, sST2 seems to be a marker of poor clinical prognosis in patients with pulmonary hypertension, but further studies are needed to evaluate its prognostic value.

### Acknowledgements

Marta Banaszekiewicz and Arkadiusz Pietrasik have contributed equally to this work.

This study was supported by funds from the statutory activity of the Centre of Postgraduate Medical Education in Warsaw, Poland (grant number 501-1-54-25-18) and the Medical University of Warsaw, Poland.

### Conflict of interest

The authors declare no conflict of interest.

### References

- Galie N, Humbert M, Vachiery JL, et al. 2015 ESC/ERS Guidelines for the diagnosis and treatment of pulmonary hypertension: The Joint Task Force for the Diagnosis and Treatment of Pulmonary Hypertension of the European Society of Cardiology (ESC) and the European Respiratory Society (ERS): Endorsed by: Association for European Paediatric and Congenital Cardiology (AEPC), International Society for Heart and Lung Transplantation (ISHLT). *Eur Respir J* 2015; 46: 903-75.
- Berghaus TM, Kutsch J, Faul C, von Scheidt W, Schwaiblmair M. The association of N-terminal pro-brain-type natriuretic peptide with hemodynamics and functional capacity in therapy-naive precapillary pulmonary hypertension: results from a cohort study. *BMC Pulm Med* 2017; 17: 167.
- Fijalkowska A, Kurzyna M, Torbicki A, et al. Serum N-terminal brain natriuretic peptide as a prognostic parameter in patients with pulmonary hypertension. *Chest* 2006; 129: 1313-21.
- Nagaya N, Nishikimi T, Uematsu M, et al. Plasma brain natriuretic peptide as a prognostic indicator in patients with primary pulmonary hypertension. *Circulation* 2000; 102: 865-70.
- Torbicki A, Kurzyna M, Kuca P, et al. Detectable serum cardiac troponin T as a marker of poor prognosis among patients with chronic precapillary pulmonary hypertension. *Circulation* 2003; 108: 844-8.



6. Jonas K, Waligora M, Magon W, et al. Prognostic role of traditional cardiovascular risk factors in patients with idiopathic pulmonary arterial hypertension. *Arch Med Sci* 2019; 15: 1397-406.
7. Liew FY, Pitman NI, McInnes IB. Disease-associated functions of IL-33: the new kid in the IL-1 family. *Nat Rev Immunol* 2010; 10: 103-10.
8. Miller AM, Liew FY. The IL-33/ST2 pathway – a new therapeutic target in cardiovascular disease. *Pharmacol Ther* 2011; 131: 179-86.
9. Weinberg EO. ST2 protein in heart disease: from discovery to mechanisms and prognostic value. *Biomark Med* 2009; 3: 495-511.
10. Villarreal DO, Weiner DB. Interleukin 33: a switch-hitting cytokine. *Curr Opin Immunol* 2014; 28: 102-6.
11. Weinberg EO, Shimpo M, De Keulenaer GW, et al. Expression and regulation of ST2, an interleukin-1 receptor family member, in cardiomyocytes and myocardial infarction. *Circulation* 2002; 106: 2961-6.
12. Pei C, Barbour M, Fairlie-Clarke KJ, Allan D, Mu R, Jiang HR. Emerging role of interleukin-33 in autoimmune diseases. *Immunology* 2014; 141: 9-17.
13. Manzano-Fernandez S, Mueller T, Pascual-Figal D, Truong QA, Januzzi JL. Usefulness of soluble concentrations of interleukin family member ST2 as predictor of mortality in patients with acutely decompensated heart failure relative to left ventricular ejection fraction. *Am J Cardiol* 2011; 107: 259-67.
14. Pascual-Figal DA, Manzano-Fernandez S, Boronat M, et al. Soluble ST2, high-sensitivity troponin T- and N-terminal pro-B-type natriuretic peptide: complementary role for risk stratification in acutely decompensated heart failure. *Eur J Heart Fail* 2011; 13: 718-25.
15. Pascual-Figal DA, Ordonez-Llanos J, Tornel PL, et al. Soluble ST2 for predicting sudden cardiac death in patients with chronic heart failure and left ventricular systolic dysfunction. *J Am Coll Cardiol* 2009; 54: 2174-9.
16. Weir RA, Miller AM, Murphy GE, et al. Serum soluble ST2: a potential novel mediator in left ventricular and infarct remodeling after acute myocardial infarction. *J Am Coll Cardiol* 2010; 55: 243-50.
17. Kohli P, Bonaca MP, Kakkor R, et al. Role of ST2 in non-ST-elevation acute coronary syndrome in the MERLIN-TIMI 36 trial. *Clin Chem* 2012; 58: 257-66.
18. Carlomagno G, Messalli G, Melillo RM, et al. Serum soluble ST2 and interleukin-33 levels in patients with pulmonary arterial hypertension. *Int J Cardiol* 2013; 168: 1545-7.
19. Geenen LW, Baggen VJM, Kauling RM, et al. The Prognostic Value of Soluble ST2 in Adults with Pulmonary Hypertension. *J Clin Med* 2019; doi: 10.3390/jcm 8101517.
20. Shao D, Perros F, Caramori G, et al. Nuclear IL-33 regulates soluble ST2 receptor and IL-6 expression in primary human arterial endothelial cells and is decreased in idiopathic pulmonary arterial hypertension. *Biochem Biophys Res Commun* 2014; 451: 8-14.
21. Kurzyna M, Araszkievicz A, Blaszczyk P, et al. Summary of recommendations for the haemodynamic and angiographic assessment of the pulmonary circulation. Joint statement of the Polish Cardiac Society's Working Group on Pulmonary Circulation and Association of Cardiovascular Interventions. *Kardiologia* 2015; 73: 63-8.
22. Groth A, Vrugt B, Brock M, Speich R, Ulrich S, Huber LC. Inflammatory cytokines in pulmonary hypertension. *Respir Res* 2014; 15: 47.
23. Zabini D, Heinemann A, Foris V, et al. Comprehensive analysis of inflammatory markers in chronic thromboembolic pulmonary hypertension patients. *Eur Respir J* 2014; 44: 951-62.
24. Lu J, Snider JV, Grenache DG. Establishment of reference intervals for soluble ST2 from a United States population. *Clin Chim Acta* 2010; 411: 1825-6.
25. Felker GM, Fiuzat M, Thompson V, et al. Soluble ST2 in ambulatory patients with heart failure: Association with functional capacity and long-term outcomes. *Circ Heart Fail* 2013; 6: 1172-9.
26. Lassus J, Gayat E, Mueller C, et al. Incremental value of biomarkers to clinical variables for mortality prediction in acutely decompensated heart failure: the Multi-national Observational Cohort on Acute Heart Failure (MOCA) study. *Int J Cardiol* 2013; 168: 2186-94.
27. Dieplinger B, Egger M, Gegenhuber A, Haltmayer M, Mueller T. Analytical and clinical evaluation of a rapid quantitative lateral flow immunoassay for measurement of soluble ST2 in human plasma. *Clin Chim Acta* 2015; 451 (Pt B): 310-5.
28. Coglianese EE, Larson MG, Vasan RS, et al. Distribution and clinical correlates of the interleukin receptor family member soluble ST2 in the Framingham Heart Study. *Clin Chem* 2012; 58: 1673-81.
29. Dieplinger B, Januzzi JL Jr, Steinmair M, et al. Analytical and clinical evaluation of a novel high-sensitivity assay for measurement of soluble ST2 in human plasma – the Presage ST2 assay. *Clin Chim Acta* 2009; 409: 33-40.
30. Chida A, Sato H, Shintani M, et al. Soluble ST2 and N-terminal pro-brain natriuretic peptide combination. Useful biomarker for predicting outcome of childhood pulmonary arterial hypertension. *Circ J* 2014; 78: 436-42.
31. Michalska-Kasiczak M, Bielecka-Dabrowa A, von Haehling S, Anker SD, Rysz J, Banach M. Biomarkers, myocardial fibrosis and co-morbidities in heart failure with preserved ejection fraction: an overview. *Arch Med Sci* 2018; 14: 890-909.
32. Dieplinger B. The Presage((R)) ST2 Assay: analytical considerations and clinical applications for a high-sensitivity assay for measurement of soluble ST2. *Expert Rev Mol Diagn* 2013; 13: 13-30.
33. Weinberg EO, Shimpo M, Hurwitz S, Tominaga S, Rouleau JL, Lee RT. Identification of serum soluble ST2 receptor as a novel heart failure biomarker. *Circulation* 2003; 107: 721-6.
34. Sabatine MS, Morrow DA, Higgins LJ, et al. Complementary roles for biomarkers of biomechanical strain ST2 and N-terminal prohormone B-type natriuretic peptide in patients with ST-elevation myocardial infarction. *Circulation* 2008; 117: 1936-44.
35. Wojtczak-Soska K, Pietrucha T, Sakowicz A, Lelonek M. Soluble ST2 protein in chronic heart failure is independent of traditional factors. *Arch Med Sci* 2013; 9: 21-6.
36. Yancy CW, Jessup M, Bozkurt B, et al. 2017 ACC/AHA/HFSA Focused Update of the 2013 ACCF/AHA Guideline for the Management of Heart Failure: A Report of the American College of Cardiology/American Heart Association Task Force on Clinical Practice Guidelines and the Heart Failure Society of America. *J Am Coll Cardiol* 2017; 70: 776-803.
37. Shah RV, Chen-Tournoux AA, Picard MH, van Kimmenade RR, Januzzi JL. Serum levels of the interleukin-1 receptor family member ST2, cardiac structure and function, and long-term mortality in patients with acute dyspnea. *Circ Heart Fail* 2009; 2: 311-9.

38. Zheng YG, Yang T, He JG, et al. Plasma soluble ST2 levels correlate with disease severity and predict clinical worsening in patients with pulmonary arterial hypertension. *Clin Cardiol* 2014; 37: 365-70.
39. Willems S, Sels JW, Flier S, et al. Temporal changes of soluble ST2 after cardiovascular interventions. *Eur J Clin Invest* 2013; 43: 113-20.
40. Pascual-Figal DA, Perez-Martinez MT, Asensio-Lopez MC, et al. Pulmonary production of soluble ST2 in heart failure. *Circ Heart Fail* 2018; 11: e005488.
41. Bayés-Genis A, González A, Lupón J. ST2 in heart failure. *Circulation: Heart Failure*. 2018; 11: e005582.
42. Placido R, Cortez-Dias N, Robalo Martins S, et al. Prognostic stratification in pulmonary hypertension: A multi-biomarker approach. *Rev Port Cardiol* 2017; 36: 111-25